



Sonar World Championships

Sailing Instructions

September 6th – 10th, 2017

Organizing Authority: Sonar Class Association

Host: Lunenburg Yacht Club
Herman's Island, Nova Scotia
Canada



The notation '[DP]' in a rule in the SI means that the penalty for a breach of that rule may, at the discretion of the protest committee, be less than disqualification.

The notation '[NP]' in a rule in the SI means that a breach of this rule will not be grounds for a protest by a boat. This changes RRS 60.1(a)

1 RULES

- 1.1 The regatta will be governed by the rules as defined in The Racing Rules of Sailing.
- 1.2 Only the prescriptions shown in Attachment 1 will apply. All other Sail Canada prescriptions will not apply.
- 1.3 The *Sonar Class Association (SCA) Constitution, By-Laws, Class Rules and Rules Governing the Sonar Class World Championship* (collectively, SCA Rules) will apply.

2 NOTICES TO COMPETITORS

Notices to competitors will be posted on the official notice board located at the Regatta Office in the Douglas Mosher Sail Training Centre.

3 CHANGES TO SAILING INSTRUCTIONS

Any change to the sailing instructions will be posted before 0900 on the day it will take effect, except that any change to the schedule of races will be posted by 2000 on the day before it will take effect.

4 SIGNALS MADE ASHORE

- 4.1 Signals made ashore will be displayed on the LYC flagpole at the northeast corner of the main clubhouse.
- 4.2 When flag AP is displayed ashore, '1 minute' is replaced with 'not less than 60 minutes'. This changes *Race Signals*.

5 SCHEDULE OF RACES

- 5.1 Dates of racing:

Sept 6	Practice race
Sept 7	Racing
Sept 8	Racing

Sept 9 Racing

Sept 10 Racing

5.2 A maximum of 12 (twelve) races may be sailed.

5.3 The scheduled time of the warning signal for the practice race is 1500.

The scheduled time of the warning signal for the first race each day is 1100.

5.4 On the last scheduled day of racing no warning signal will be made after 1500 unless required to constitute a series.

6 RACING AREAS

Attachment 2 shows the planned location of racing area on the waters of Mahone Bay (Chart 4381).

7 CHECK-IN AND CHECK-OUT [DP] [NP]

7.1 Boats shall check in with the RC signal boat by sailing past the stern of the RC signal boat and hailing their sail number prior to their first preparatory signal of the day.

7.2 Boats that retire during a race or leave the racing area between races shall check out with the RC either by hail or on VHF 72.

8 THE COURSES

8.1 The diagrams in Attachment 3 show the courses, including the order in which marks are to be passed, and the side on which each mark is to be left.

8.2 The course to be sailed, approximate compass bearing and approximate distance from the signal boat to the windward mark will be displayed on the RC signal boat and broadcast on VHF 72 before the warning signal. Failure of the RC to broadcast or failure of the competitor to receive this notification on VHF 72 will not constitute grounds for requesting redress. This changes rule 62.1(a).

8.3 Courses will not be shortened to less than 4 legs. For the purpose of this instruction, the course between mark 1 and mark 1a will not be considered a leg.

9 MARKS

9.1 Mark 1 will be a yellow cylinder.

Mark 1a will be a yellow tetrahedron.

Mark 2S and 2P will be yellow tetrahedrons.

9.2 New marks, as provided in SI 11, will be orange cylinders and red tetrahedrons.

9.3 The starting and finishing marks will be a yellow narrow cylinder or an RC boat.

9.4 If the leeward gate is replaced by a single mark, it shall be left to port.

10 THE START

10.1 The starting line will be between a staff displaying an orange flag on the RC Signal boat at the starboard end and a staff displaying an orange flag on the RC Pin boat.

10.2 The RC will attempt to hail OCS boats by sail number on channel 72. Failure to hail; the hail of some, but not all boats; or the timing of the hail shall not be grounds for requesting redress. This changes RRS 62.1(a).

- 10.3** The sail numbers of boats OCS, UFD or BFD may be posted on the signal boat following the race.
- 10.4** A boat that does not start within 5 minutes after her starting signal will be scored Did Not Start (DNS) without a hearing. This changes RRS A4 and A5.

11 CHANGE OF THE NEXT LEG OF THE COURSE

To change the next leg of the course, the race committee will lay a new mark (or move the finishing line) and remove the original mark as soon as practicable. When in a subsequent change a new mark is replaced, it will be replaced by an original mark.

12 THE FINISH

The finishing line will be between the course side of a yellow narrow cylindrical mark at one end and a staff displaying an orange flag on the RC Signal boat at the other end.

13 PENALTY SYSTEM

13.1 PENALTIES WHILE RACING

If a boat takes a penalty for breaking a rule of Part 2 while racing her penalty will be a One-Turn Penalty; but if she breaks a rule of Part 2 within the zone around a mark other than a starting mark, the penalty will be a Two-Turns Penalty. This changes RRS 44.1.

13.2 PENALTIES TAKEN AFTER A RACE

After a race, a boat that may have broken a rule of Part 2 or RRS 31 while *racing* may take a Post-Race Penalty for that incident. The penalty shall be a Scoring Penalty, calculated as stated in RRS 44.3(c). However RRS 44.1(a) and (b) apply. A boat takes a Post-Race Penalty by informing the jury in writing and identifying the race number and when and where the incident occurred. The Post-Race Penalty shall be:

- (a) 20%, if taken before the protest time limit, or
- (b) 30% if taken after the protest time limit but before the beginning of a hearing involving the incident.

- 13.3** The jury may apply discretionary penalties for infractions of the rules other than RRS 2, rules of Part 2, or RRS 31.

14 TIME LIMITS

- 14.1** If no boat has passed Mark 1 within 40 minutes the race will be abandoned.
- 14.2** The time limit for the first boat to finish the race is 120 minutes.
- 14.3** Boats failing to finish within 30 minutes after the first boat sails the course and finishes will be scored Did Not Finish (DNF) without a hearing. This changes RRS 35, A4 and A5.

15 PROTESTS AND REQUESTS FOR REDRESS

- 15.1** Protest forms are available at the Regatta Office located in the Douglas Mosher Sail Training Centre. Protests and requests for redress or reopening shall be delivered there within the applicable time limit.
- 15.2** The protest time limit is 60 minutes after the RC signal boat docks.

- 15.3** Notices will be posted no later than 30 minutes after the protest time limit to inform competitors of hearings in which they are parties or named as witnesses. Hearings will be held in the protest room, located at the Douglas Mosher Sail Training Centre.
- 15.4** Notices of protests by the race committee or protest committee will be posted to inform boats under RRS 61.1(b).
- 15.5** On the last scheduled day of racing a request for redress based on a jury decision shall be delivered no later than 30 minutes after the decision was posted. This changes RRS 62.2.
- 15.6** Decisions of the international jury will be final as provided in RRS 70.5.

16 SCORING

- 16.1** Four (4) races are required to be completed to constitute a series.
- 16.2** (a) When fewer than 6 races have been completed, a boat's series score will be the total of her race scores.
(b) When from 6 to 9 races have been completed, a boat's series score will be the total of her race scores excluding her worst score.
(c) When 10 or more races have been completed, a boat's series score will be the total of her race scores excluding her two worst scores.

17 REPLACEMENT OF CREW OR EQUIPMENT [DP]

Substitution of damaged or lost equipment will not be allowed unless authorized by the race committee. Requests for substitution shall be made to the committee at the first reasonable opportunity.

18 EQUIPMENT AND MEASUREMENT CHECKS [DP]

A boat or equipment may be inspected at any time for compliance with the class rules. On the water, a boat can be instructed by a member of the race committee or the measurer to proceed immediately to a designated area for inspection.

19 OFFICIAL BOATS [NP]

Signal boat, pin boat and mark boats will be marked with an RC flag. Jury boat will be marked with a flag displaying the letter 'J'. Course Patrol boat will be marked with a flag displaying the letters 'CP'. Official spectator boat(s) will be marked with a flag displaying the letter 'P'.

20 COACH AND SUPPORT BOATS [DP] [NP]

- 20.1** Competing boats shall not be towed to and from the race course unless approved by the Race Committee.
- 20.2** Support boats, including coach, press, private and spectator boats shall register at the Race Office during the registration period and may be issued with an identity flag to be prominently displayed at all times when afloat. The person in charge of the competing boat(s) to which support boats are attached shall acknowledge the presence of a support boat on their registration form.
- 20.3** All support or coach boats shall stay more than 30 meters to leeward of the starting line, more than 30 meters away from marks of the course and more than 130 meters away from any

racing boats from the time of the preparatory signal for the first race of the day until all boats have finished racing for the day or the Race Committee signals a postponement or abandonment of racing for the day.

21 BERTHING [DP] [NP]

Boats shall be kept in their assigned places while they are in the harbour.

22 HAUL-OUT RESTRICTIONS [DP]

Boats shall not be hauled out during the regatta except with and according to the terms of prior written permission of the race committee.

23 DIVING EQUIPMENT AND PLASTIC POOLS [DP]

Underwater breathing apparatus and plastic pools or their equivalent shall not be used around boats between the preparatory signal of the first race and the end of the regatta.

24 RADIO COMMUNICATION [DP]

24.1 Except in an emergency, a boat shall neither make radio transmissions while racing nor receive radio communications not available to all boats. This restriction also applies to mobile telephones. Cellular data transmission from the application RaceQs, as authorized by the race committee, are exempted.

24.2 The race committee will use VHF radio channel 72 to communicate to the fleet, which may include the location of the starting area, countdown to the start, OCS sail numbers, general recalls and postponements or abandonments. Failure of the race committee to make these broadcasts or failure to include a sail number or failure of a competitor to hear these broadcasts shall not be grounds for redress. This changes RRS 62.1.

24.3 The race committee will use VHF channel 73 for race committee course operations.

25 RACE TRACKER

The race committee will be offering boats the opportunity to use the RaceQs race tracker during racing. The purpose of this is to provide opportunity for post-race review by competitors and review of performance in the fleet. The accuracy and precision of the system is not adequate for exact positioning and the relative or absolute position data from RaceQs will not be admissible by the jury in protest hearings regarding Part 2 infractions, Rule 31 infractions or Requests for Redress hearings regarding starting penalties.

26 PRIZES

Prizes will be awarded to the top five boats in the series. Daily prizes will be awarded to the top three boats each day.

27 DISCLAIMER OF LIABILITY

27.1 Competitors participate in the regatta entirely at their own risk. See RRS 4, Decision to Race. Neither the Organizing Authority nor the Host will accept any liability for material damage or personal injury or death sustained in conjunction with or prior to, during, or after the regatta.

27.2 All competitors will be required to sign a Competitors Liability Waiver form during registration.

28 INSURANCE [DP]

Each participating boat shall be insured with valid third-party liability insurance with a minimum cover of C\$600,000 per incident or the equivalent. It is the owner or owner's representative's sole and inescapable responsibility to ensure that the insurance is in place and is adequate prior to participating in this event. The organizing authority will require proof of insurance, such as a Certificate of Insurance or a copy of your insurance binder, at registration.

29 MEDIA RIGHTS

Competitors give absolute right and permission for video footage or photographs of themselves or their boat to be published in any media for press, editorial or advertising purposes.

ATTACHMENT 1

Sail Canada Prescriptions that will apply

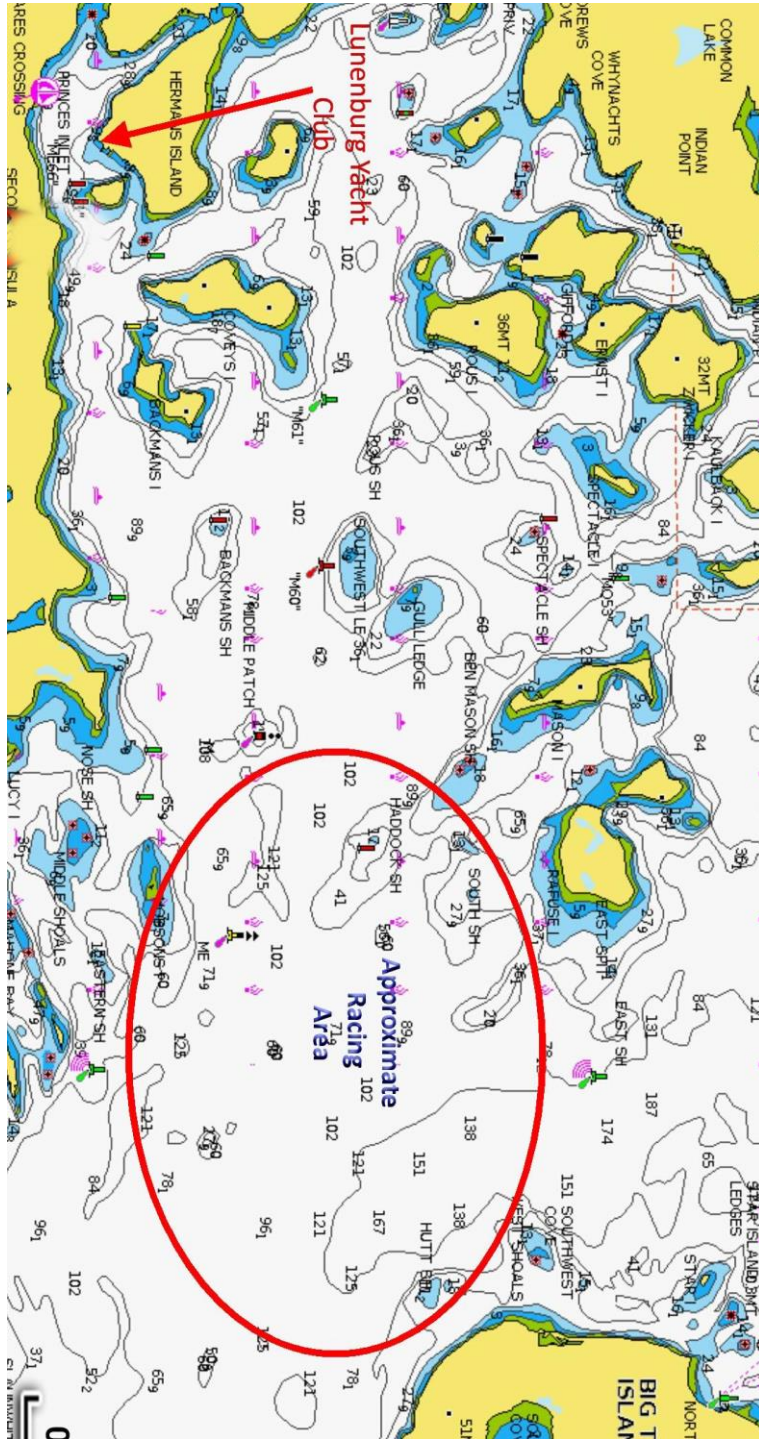
Rule 61.2 – Protest Contents: Sail Canada prescribes that no fee shall be charged for delivering a protest or a request for redress.

Rule 67 – Damages: Sail Canada prescribes that a boat that has been found by a protest committee to have broken a rule and caused damage shall be considered at fault for the purposes of rule 67.

Rule 91(b) – Protest Committee: Sail Canada prescribes that a request for an international jury formed under rule N1.7 comprised of only three members requires written approval be obtained from Sail Canada before making the request to World Sailing.

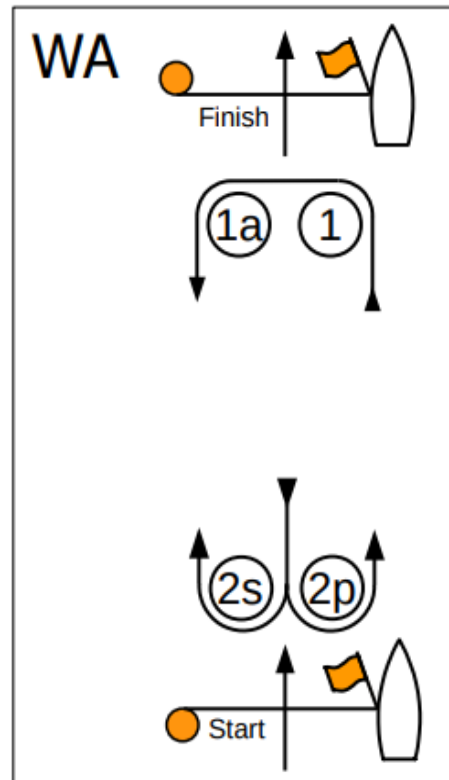
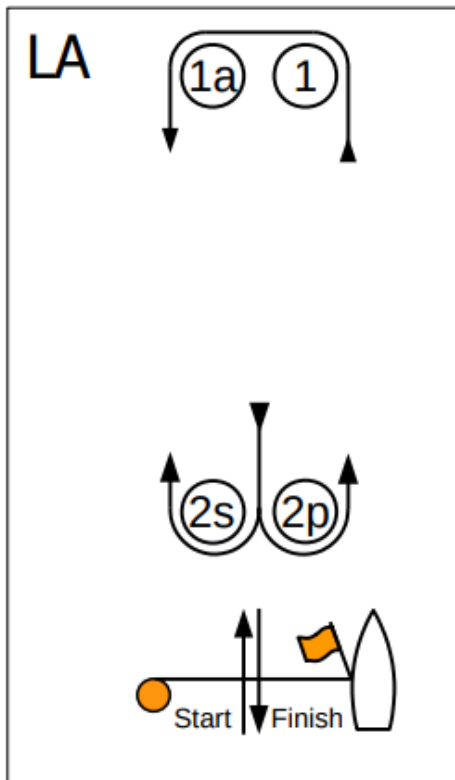
ATTACHMENT 2

Planned Racing Area on waters of Mahone Bay (chart 4381)



ATTACHMENT 3 COURSE DIAGRAMS

Course	Signal flag
LA2	Numeral Pennant 1
LA3	Numeral Pennant 2
WA3	Numeral Pennant 3



Course LA – Windward/Leeward with Offset Mark, Leeward Finish	
<i>Signal</i>	<i>Mark Rounding Order</i>
LA2	Start – 1 – 1a – 2s/2p – 1 – 1a – Finish
LA3	Start – 1 – 1a – 2s/2p – 1 – 1a – 2s/2p – 1 – 1a – Finish

Course WA – Windward/Leeward with Offset Mark, Windward Finish	
<i>Signal</i>	<i>Mark Rounding Order</i>
WA3	Start – 1 – 1a – 2s/2p – 1 – 1a – 2s/2p – Finish